



BBSRC Doctoral
Training Partnerships



Durham
University



UNIVERSITY OF
LIVERPOOL



Newcastle
University

Professional Internships for PhD Students

AN INTRODUCTION

PIPS Engagement Event

Newcastle / Liverpool / Durham



“Postgraduate Internships for PhD Students (PIPS) provide students with an opportunity for professional skills development and will enable them to develop a broader understanding of how their research training can have an impact in the wider economy and society.”

Dr Celia Caulcott,
BBSRC Director of Innovation and Skills

The Newcastle, Liverpool and Durham Partnership’s view on PIPS

“Our partnership does not want to be overly prescriptive in the timing or in the nature of your internship; this would devalue the decision making that is an essential part of the professionalism we hope to engender. We hope you will work with your supervisors and the contacts provided to find an internship project that will give you an experience you are able to reflect on positively.”

Dr Richy Hetherington
NLD PIPS Co-ordinator

The PIPS Requirements

- Internships are up to three months in length
at any point from now until the final year.
- Timings are flexible
can be in three month block or distributed over a longer period.
- It is possible to combine two internship positions
With time spent adding up to around three months.
- Internships can be in any field but should be outside of academic research
This is very flexible but it is essential to see a new environment.
- Geography is not an issue
Local or abroad there is support for travel.
- This is 'your' internship
We can provide help with looking but you will need to find a PIPS that is right for you.

What you will need to do

1. Discuss your internship with your supervisors.
2. Consider where you might like to have an internship.
3. Approach the internship host (your supervisors, universities and the partnership are here to help you make those connections).
4. Apply for a bursary if you need help with travel or accommodation.
5. Complete an outside study form for your University.
6. Enjoy your internship.
7. Complete an evaluation form for the BBSRC and for the Partnership.

All of the information you need can be found at
<http://www.nld-dtp.org.uk/internships/>

Where have previous Interns been and what have they done?



Newcastle Student **Annie Gott** did not feel it was really possible to travel too far for her internship but still managed to find some very valuable practical experience working with animals. Experience that will be valuable if Annie decides to continue in academic research dealing with animals. Annie was also able to gain excellent experience getting to grips with managing a different type of project.



"I gained a huge amount of responsibility and felt very trusted to be able to take charge of this section of the zoo. I also became very good at using my initiative and came up with intuitive ways to improve the zoo's record keeping and the day to day admin required when managing a zoo."

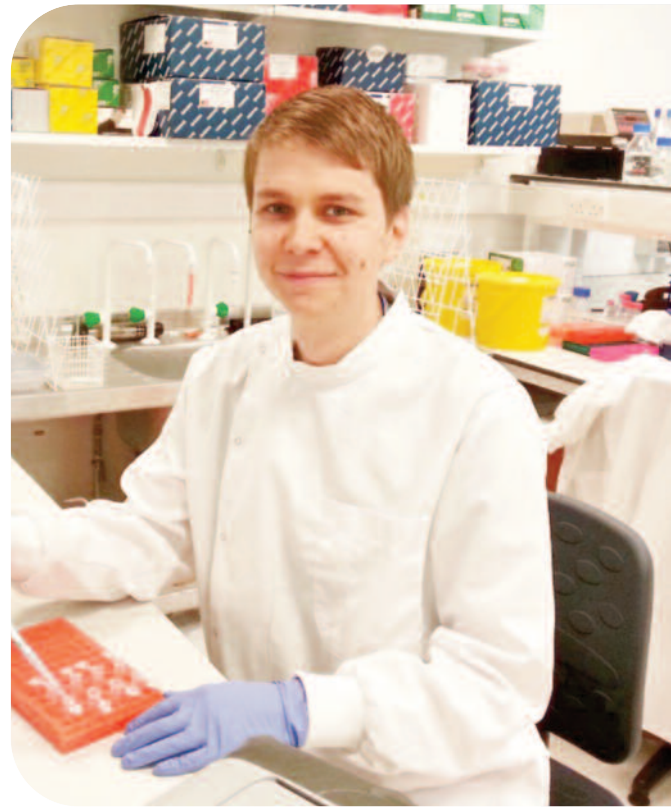
Liverpool Student **Rachel Ghadiali** was interested to find out more about the commercialisation of science with the help of one of supervisors Rachel secured an internship with a biotech company Avalia Immunotherapies and an investment company Powerhouse ventures. The internship helped Rachel to make some significant choices about her future career.

"My internship made me think a lot more about the important relationship between academia and industry and the importance of having a multi-disciplinary outlook"



Anthony Moore of Newcastle University said:

“For my PIPS internship, I spent 3 months working at AgResearch, a commercial scientific research facility, in a small city called Palmerston North in New Zealand. Here I helped them with miRNA extraction, pathway analysis and was even able to use one of their novel cell culture systems to help me in my own PhD.”



Interns presenting today

Flora Hetherington, Durham University

Food and Environment Research Agency (FERA), York

- a leading supplier of scientific solutions, evidence and advice across the agri-food supply chain.



Neil Smith, University of Liverpool

C4X Discovery, Manchester

- a productive drug discovery and development company.



Prospective Internship Hosts

Deborah Hogg is the Process Development group leader in Technical Services/Manufacturing Support (TS/MS) at **Elanco**, Liverpool. Elanco is a global, innovation-driven company that develops and markets products to improve animal health and protein production in more than 75 countries. Elanco employs more than 2,300 people worldwide, with offices in more than 40 countries, and is a division of Eli Lilly and Company, a leading global pharmaceutical corporation.



Simon Wells is Director of Product Development at LGC, an international life sciences measurement and testing company, building leading positions in sustainably growing markets. LGC group provide reference materials, genomics solutions and analytical testing products and services, based on our innovations and own intellectual property. We work with customers in the pharmaceuticals, agricultural biotechnology, food, environment, security and sports sectors as well as with governments and academia to achieve excellence in investigative, diagnostic and measurement science.

Sophie Clift is the Marketing Manager and Product Specialist at Cambridge Research Biochemicals (CRB) a North-East based provider of the highest quality custom peptides and custom antibodies for research applications. CRB celebrates its 36th anniversary this year and specialities include complex peptide synthesis including heavily modified and labelled peptides (CRB have the largest range of fluorescent dyes in the world) and polyclonal and monoclonal antibody generation against either peptides, synthesised in house, or protein provided by the customer.



Kate Lansley is the Youth Engagement Coordinator at Youth Hostel Association. The Youth Hostel Association is a charity with the mission to help all, especially young people of limited means, to a greater knowledge, love and care of the countryside, and appreciation of the cultural values of towns and cities, particularly by providing Youth Hostels or other accommodation for them in their travels, and thus to promote their health, recreation and education.

Not attending but would be interested to hear from you:

Jane Theaker, the head of IVD Technology at QIAGEN Manchester Ltd. QIAGEN's global centre of excellence for the development of molecular diagnostic tests. A key focus for QIAGEN's assay development program "Companion Diagnostic" tests. These tests are used to determine if a drug will be suitable to prescribe to a particular patient the "personalised medicine" approach to the treatment of patients, especially in Oncology.



Alcyomics

Dr Shaheda Ahmed is the Senior Scientific Officer at Alcyomics, a spin-out company from Newcastle University. Though they are a small company at present they have an enormous potential for their patented Skinmune™ explant system for drug and chemical testing. Internships in small spin-out companies such as Alcyomics offer a great opportunity for research students to see how academic research can be developed into outputs in the real world. The differences from an academic research environment may be subtle but are clear. www.alcyomics.com

Dr Linda Wainwright is a Project Leader at Unilever in R&D. On any given day, two billion people use Unilever products to look good, feel good and get more out of life. With more than 400 brands focused on health and wellbeing, no company touches so many people's lives Unilever are Innovation is key to progress, and through cutting-edge science Unilever is constantly enhancing its brands. Unilever invests around €1 billion every year in R&D around the world.



KWS



Professor Chris Tapsell is the Technical Director of KWS, one of the world's four leading plant breeding companies. With headquarters in Einbeck (Germany) KWS has offices in over 70 countries and breeding locations throughout the main crop growing zones including the UK. Internships in various formats are available, in many countries offering opportunities across the spectrum of functions within the organisation, including breeding, research, commercial, HR etc. In addition KWS runs specific career entry programs including a Breeding Academy and Trainee positions.

Providing support



Dr Richy Hetherington is responsible for postgraduate development in Newcastle's Faculty of Medical Sciences. Richy will be a key contact for Newcastle students as they consider internship positions and is the co-ordinator for the PIPS event. After completing a doctorate in Evolutionary Genetics at Imperial College London Richy worked in the NHS and spent several years working in industrial bioscience.

Ms Sarah Golightly and **Mr Robert Oswald** provide administrative support for the PIPS programme and the DTP more generally. They are available to deal with any queries about expenses, bursary payments or the feedback required after you have completed an internship.



Ms Clare Martindale is the Placement Officer for Science & Engineering at the University of Liverpool. Based within the Careers & Employability Service, she is a key contact for students considering their internship options and throughout the application process.

Dr Richard Hinchcliffe is the Head of Postgraduate Research Student Development at Liverpool University. A highly experienced and very well connected opportunities expert in the professional development of highly skilled researchers will be able to offer support across the partnership but particularly to Liverpool students.



Dr Sam Nolan leads Durham's provision of high quality and evidence based professional development for researchers within CAROD supporting high quality research and helping to develop innovative research-led educators. Working with his own Ph.D. students, Sam went onto develop a leadership role in a large European telescope project. At the same time Sam developed an interest in enhancing teaching and learning through his work on laboratory virtualisation.

Mr David Henderson is Postgraduate Careers Adviser, Durham University Careers, Employability and Enterprise Centre (CEEC). David is responsible for the design and delivery of careers support to postgraduate research students and postdoctoral research staff. This includes individual consultations and group activities related to career planning and management.



Dr Diane Cresswell is the Executive Director for Business Development at Bionow. Bionow is a not for profit membership organisation for the biomedical/life-sciences industry in the North of England and supports business growth, competitiveness and innovation. Our membership base includes start-ups and early stage firms as well as established growth-oriented companies. Bionow's membership offering focuses upon the specific needs of firms at their different stages of development, including dedicated business support programmes, shared procurement schemes with significant cost savings, exclusive insurance benefits, recruitment and training services, local and national events and access to a vibrant network of businesses. For more information, visit www.bionow.co.uk

Event Schedule

18th March 2016

Queen's Hotel, Leeds

- 10:00 - 10:30** **Delegate arrival and registration**
- 10:30 - 11:00** **Introduction** - Professor Keith Lindsey and Dr Tim Cheek
- 11:00 - 11:30** **Previous interns**
two former interns share their experience
- 11:30 - 12:30** **Discussion with former interns**
and discussion of other internships
- 12:30 - 13:30** **Lunch**
- 13:30 - 15:00** **Prospective internship hosts**
present about their organisations and internships
- 15:00 - 15:30** **Local groups to discuss arrangements**
Newcastle: Richy and Robert, Liverpool: Richard and Clare,
Durham: Sam and David
- 15:30 - 16:00** **Facilitated discussion** - Richy Hetherington and Diane Cresswell:
Who to approach and how to approach them when looking for
an internship
- 16:00 - 16:30** **Coffee**
- 16:30 - 18:00** **Which internship is right for you?**
Reflections on the way people like to work and what experience
would be useful from a professional development perspective
- 18:00 - 19:30** **Downtime**
- 19:30 - 20:00** **Drinks**
- 20:00 - 21:00** **Dinner**

Contact information

All Initial enquiries to:
Dr Richy Hetherington
Graduate School
Faculty of Medical Science
Newcastle University

0191 208 7874
richard.hetherington@ncl.ac.uk